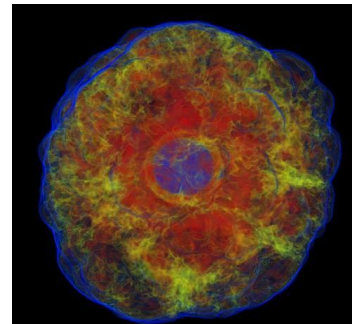
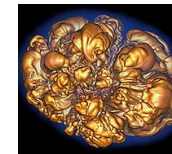
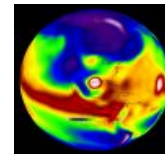
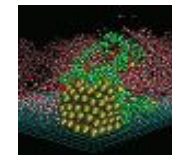
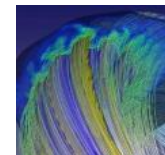
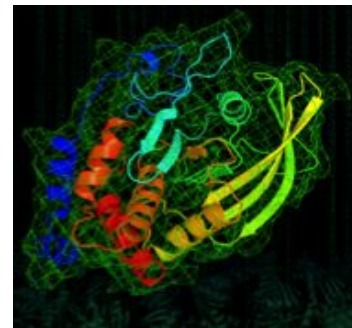
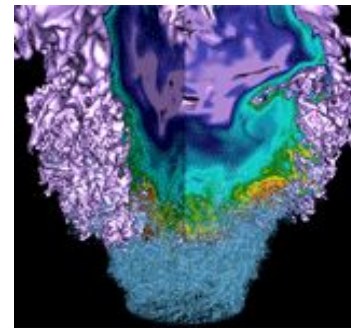


Focus Groups to Focus Efforts: Building the NERSC Community of Practice

Lipi Gupta*, Kevin Gott, Annette Greiner, Charles Lively, Erik Palmer, Hannah Ross, Rebecca Hartman-Baker
*lipigupta@lbl.gov



SC 2023

Nov. 15, 2023

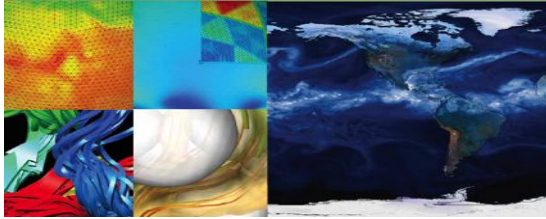
NERSC: Mission HPC for DOE Office of Science Research



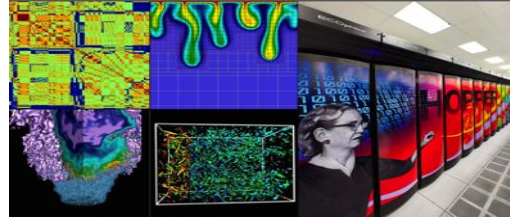
U.S. DEPARTMENT OF
ENERGY

Office of
Science

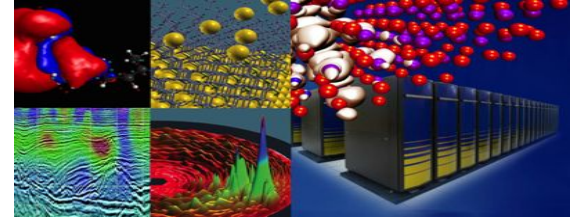
Largest funder of physical
science research in the U.S.



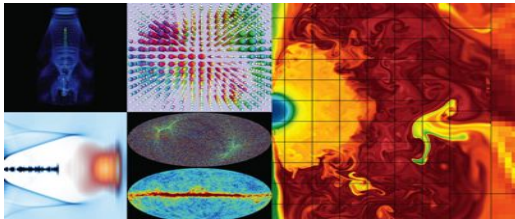
Biological & Environmental Research



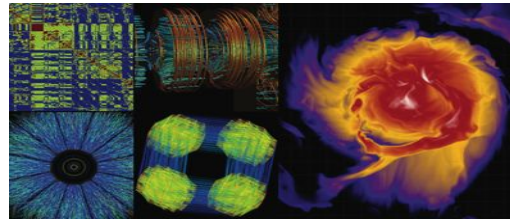
Computing



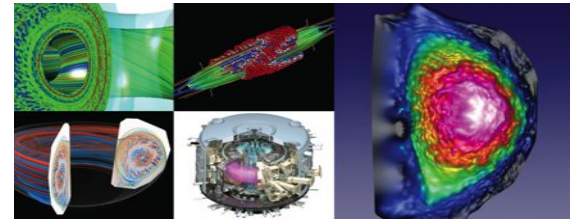
Basic Energy Sciences



High Energy Physics



Nuclear Physics



Fusion Energy, Plasma Physics

A Community of Practice



Value generated by members together:

Increase the knowledge flow from NERSC to users and vice versa, by creating additional connections between users and staff, while also allowing users to interact and collaborate more freely.

What it might look like...

- User-led special interest groups
- Regular networking and/or social events
- Virtual and in-person discussion spaces

Community of Communication



Most communication is internal to one's own research group

Expand networks

Some users are not confident enough to make public postings in the Slack (early career and some PIs)

Find safer alternatives

Most users seek help from a known colleague/internal channels first

Set new users up for success early

Summary



Focus groups can be used to gain insight and nuanced information

Building community means building trust and safe spaces

Members need support when starting at NERSC/HPC

Thanks!

